

# Lead Sheet Tips

## INTRO

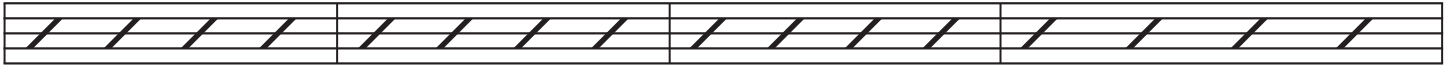
C D min F G C D min F G



## Verse

*mp*

C G/B F D min G



5

*sign*

C G/B D min G



9

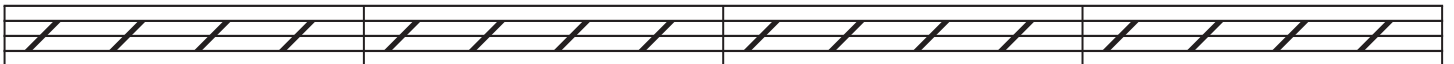
E min F E min F G *To Coda*



13

## CHORUS

C D min F G C D min F G



17

*mf*

C D min F G C D min F G



21

A min D min F Gsus C D min F *D.S. al Coda*  
G



25

 *coda*

C D min F G C D min G



29 CHORUS

# Lead Sheet Tips

2

## Please Remember

A min D min F G A min G F A

33

CHORUS  
D E min G A D E min G A

37 *f*

D E min G A D E min G A

41

first ending second ending

B min E min G A 1 2. D E min A

45

D E min G A 4X's D

49 *mp* *rit.*

D.S. is a term from classical music that means Del Segno in Italian -Find The Sign in English. When we D.S. we go back and start playing from the sign. If the indication is D.S al Coda.....we play from the sign then when we see the TO CODA we jump ahead to the coda sign. if there is a 4X's indication above the repeat sign we play the repeated section 4 times or as many times as is indicated.